

# "Buy a Brick" Order Form

Help us make a little history by recognizing a teacher, honoring a student, creating a memorial to a loved one.

The corner site provides space for more than 1,000 pavers. They may be sponsored for a \$100 gift (4" x 8") or \$200 gift (8" x 8").

To confirm purchase, use this form or contact Development Director Anne Westfall at 615/277-7495 or awestfall@usn.org. We will send you a receipt for your tax deductible gift.

Name: \_\_\_\_\_

Address: \_\_\_\_\_

City, State, Zip: \_\_\_\_\_

Phone Number: \_\_\_\_\_ Email: \_\_\_\_\_

Visa \_\_\_\_\_ MasterCard \_\_\_\_\_ Card Number \_\_\_\_\_ Expiration \_\_\_\_\_

Signature \_\_\_\_\_

\$100 for 4" x 8" brick

Price includes up to 3 lines, maximum 15 characters per line. Characters include spaces and punctuation.

--	--	--	--	--	--	--	--	--	--	--	--	--	--	--

--	--	--	--	--	--	--	--	--	--	--	--	--	--	--

--	--	--	--	--	--	--	--	--	--	--	--	--	--	--

### Examples:

John TeSelle  
Class of 1983

In honor of  
Jane Smith  
Class of 1947

In memory of  
Hazel Lundberg  
English teacher  
1947-1968

\$200 for 8" x 8" brick

Price includes up to 6 lines, maximum 15 characters per line. Characters include spaces and punctuation.

--	--	--	--	--	--	--	--	--	--	--	--	--	--	--

--	--	--	--	--	--	--	--	--	--	--	--	--	--	--

--	--	--	--	--	--	--	--	--	--	--	--	--	--	--

--	--	--	--	--	--	--	--	--	--	--	--	--	--	--

--	--	--	--	--	--	--	--	--	--	--	--	--	--	--

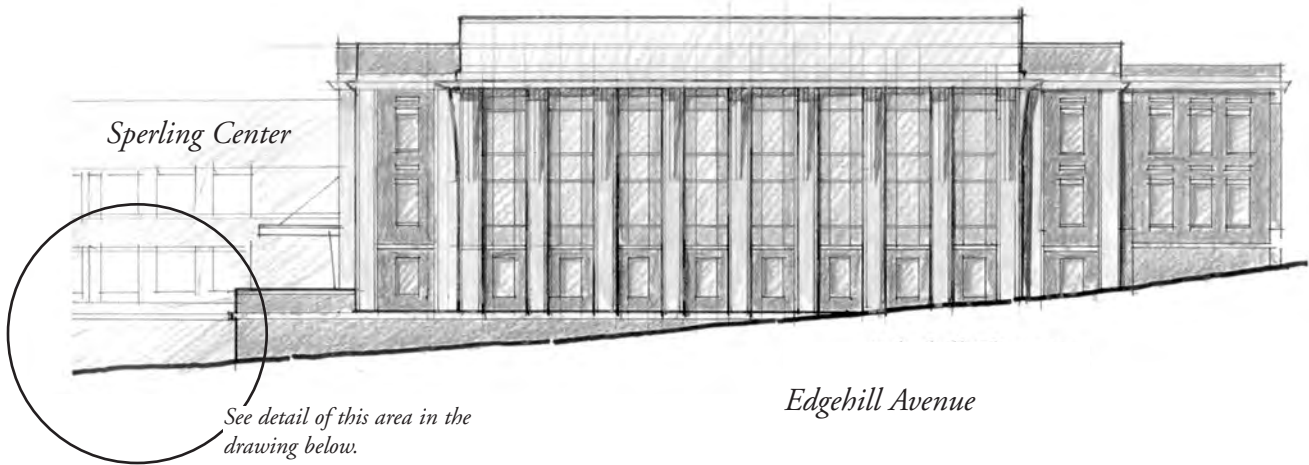
--	--	--	--	--	--	--	--	--	--	--	--	--	--	--

TSSAA  
Volleyball  
State Champs  
1993,1994,  
1995,1996

### Make checks payable to:

University School of Nashville  
2000 Edgehill Avenue  
Nashville, TN 37212

Questions? Call or email Anne Westfall at 615/277-7495 or awestfall@usn.org



The commemorative pavers are set adjacent to the crescent-shaped planter indicated in the drawing. (drawing by Frances Wright '06).

